

**RBPJL Antibody (N-term)**  
**Affinity Purified Rabbit Polyclonal Antibody (Pab)**  
**Catalog # AP12042a****Specification**

---

**RBPJL Antibody (N-term) - Product Information**

Application	WB, FC, IHC-P,E
Primary Accession	<a href="#">O9UBG7</a>
Other Accession	<a href="#">NP_055091.2</a>
Reactivity	Human
Host	Rabbit
Clonality	Polyclonal
Isotype	Rabbit IgG
Calculated MW	56751
Antigen Region	8-36

**RBPJL Antibody (N-term) - Additional Information****Gene ID** 11317**Other Names**

Recombining binding protein suppressor of hairless-like protein, Transcription factor RBP-L, RBPJL, RBPL, RBPSUHL

**Target/Specificity**

This RBPJL antibody is generated from rabbits immunized with a KLH conjugated synthetic peptide between 8-36 amino acids from the N-terminal region of human RBPJL.

**Dilution**

WB~~1:2000  
FC~~1:10~50  
IHC-P~~1:10~50  
E~~Use at an assay dependent concentration.

**Format**

Purified polyclonal antibody supplied in PBS with 0.09% (W/V) sodium azide. This antibody is purified through a protein A column, followed by peptide affinity purification.

**Storage**

Maintain refrigerated at 2-8°C for up to 2 weeks. For long term storage store at -20°C in small aliquots to prevent freeze-thaw cycles.

**Precautions**

RBPJL Antibody (N-term) is for research use only and not for use in diagnostic or therapeutic procedures.

**RBPJL Antibody (N-term) - Protein Information**

**Name** RBPJL

**Synonyms** RBPL, RBPSUHL

**Function** Putative transcription factor, which cooperates with EBNA2 to activate transcription.

**Cellular Location**

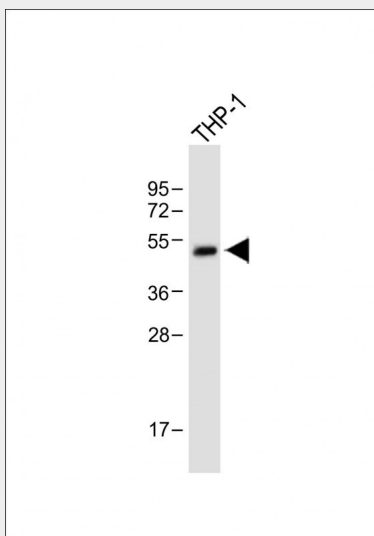
Nucleus.

### **RPJL Antibody (N-term) - Protocols**

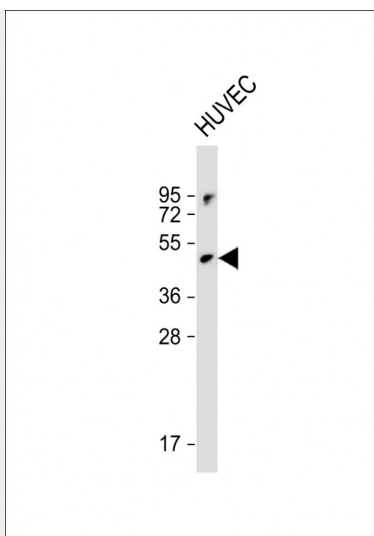
Provided below are standard protocols that you may find useful for product applications.

- [Western Blot](#)
- [Blocking Peptides](#)
- [Dot Blot](#)
- [Immunohistochemistry](#)
- [Immunofluorescence](#)
- [Immunoprecipitation](#)
- [Flow Cytometry](#)
- [Cell Culture](#)

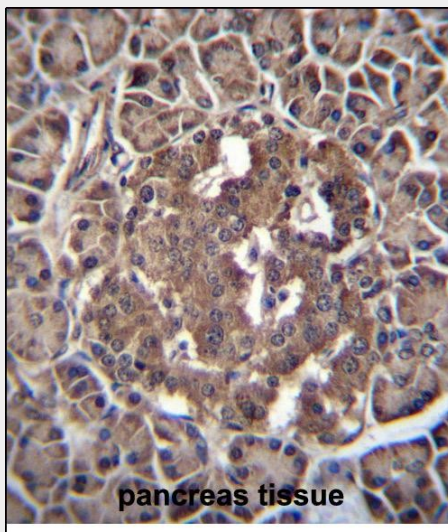
### **RPJL Antibody (N-term) - Images**



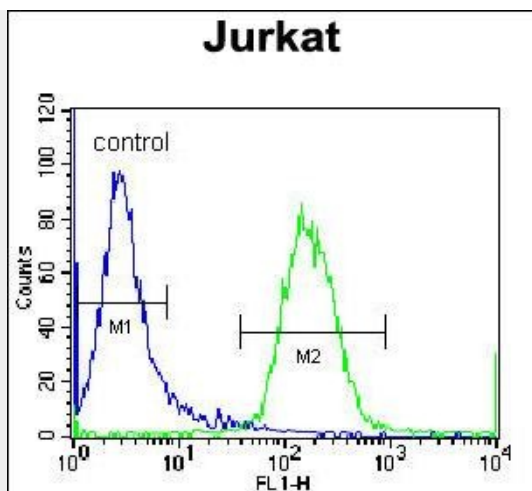
Anti-RBPJL Antibody (N-term) at 1:2000 dilution + THP-1 whole cell lysate Lysates/proteins at 20 µg per lane. Secondary Goat Anti-Rabbit IgG, (H+L), Peroxidase conjugated at 1/10000 dilution. Predicted band size : 57 kDa Blocking/Dilution buffer: 5% NFDM/TBST.



Anti-RBPJL Antibody (N-term) at 1:2000 dilution + HUVEC whole cell lysate Lysates/proteins at 20  $\mu$ g per lane. Secondary Goat Anti-Rabbit IgG, (H+L), Peroxidase conjugated at 1/10000 dilution. Predicted band size : 57 kDa Blocking/Dilution buffer: 5% NFDM/TBST.



RBPJL Antibody (N-term) (Cat. #AP12042a) immunohistochemistry analysis in formalin fixed and paraffin embedded human pancreas tissue followed by peroxidase conjugation of the secondary antibody and DAB staining. This data demonstrates the use of RBPJL Antibody (N-term) for immunohistochemistry. Clinical relevance has not been evaluated.



RBPJL Antibody (N-term) (Cat. #AP12042a) flow cytometric analysis of Jurkat cells (right histogram) compared to a negative control cell (left histogram). FITC-conjugated donkey-anti-rabbit secondary antibodies were used for the analysis.

### **RBPJL Antibody (N-term) - Background**

In mouse, recombining binding protein L (RBP-L) is a transcription factor that binds to DNA sequences almost identical to that bound by the Notch receptor signalling pathway transcription factor RBP-J. However, unlike RBP-J, RBP-L does not interact with Notch receptors. RBP-L has been shown to activate transcription in concert with Epstein-Barr virus nuclear antigen-2 (EBNA2). The protein encoded by this gene is similar in sequence to the mouse RPB-L protein and Drosophila suppressor of hairless protein.

### **RBPJL Antibody (N-term) - References**

- Beres, T.M., et al. Mol. Cell. Biol. 26(1):117-130(2006)
- Deloukas, P., et al. Nature 414(6866):865-871(2001)
- Nakagawa, H., et al. Oncogene 19(2):210-216(2000)
- Tani, S., et al. J. Hum. Genet. 44(1):73-75(1999)
- Minoguchi, S., et al. Mol. Cell. Biol. 17(5):2679-2687(1997)